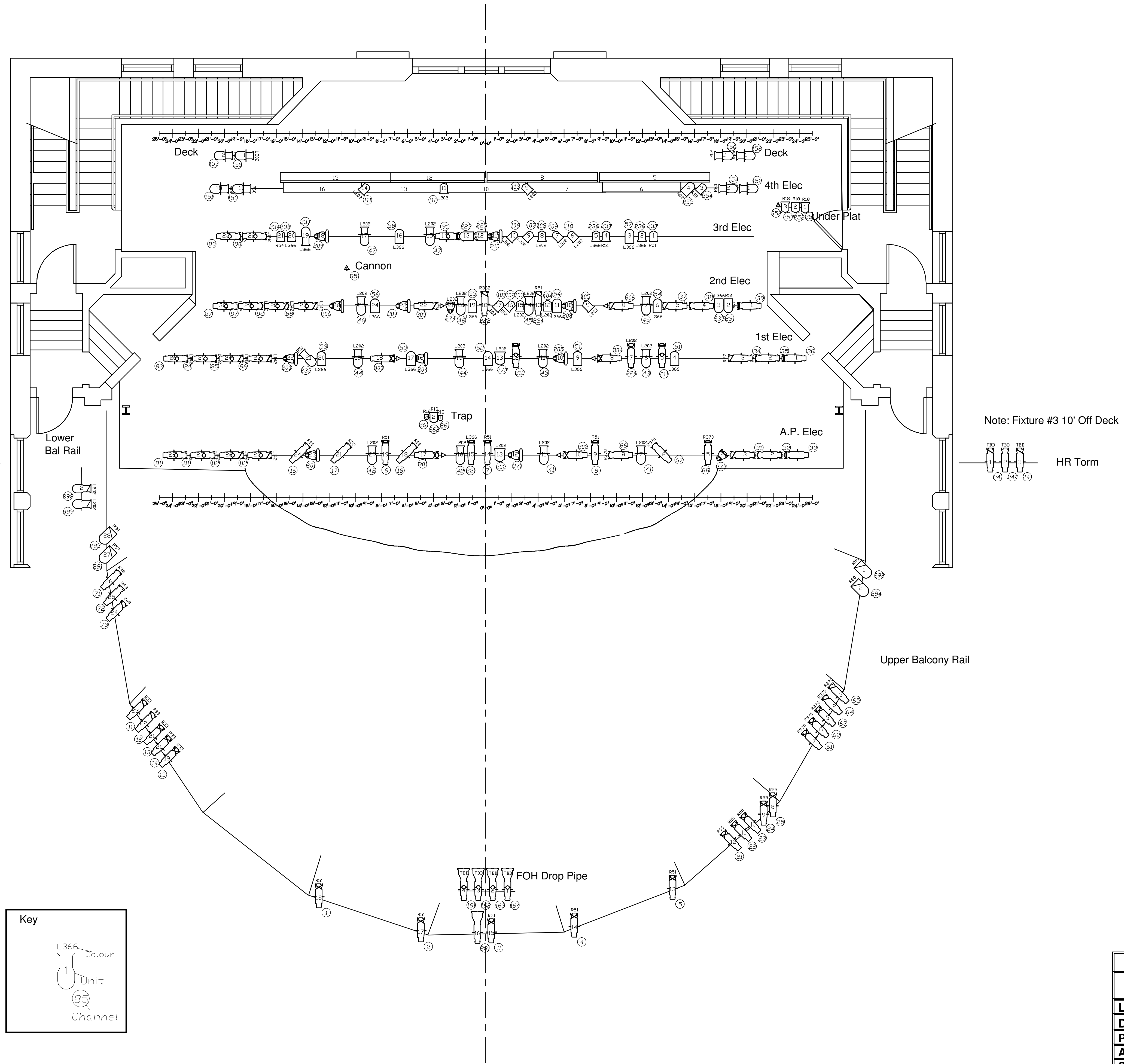


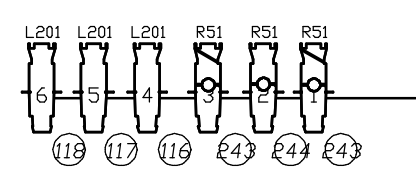
NOTES

- All trims TBD at Focus
- FOH Drop pipe places as low as possible
- Intels patched as attributes
- Deck/Set Mounts placement TBD
- Extra 4 Elipskans provided by designer



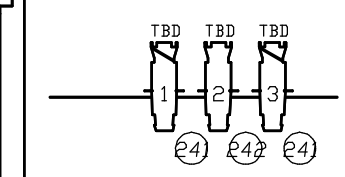
Note: Fixture #6 6'8" Off Deck

HL Torm

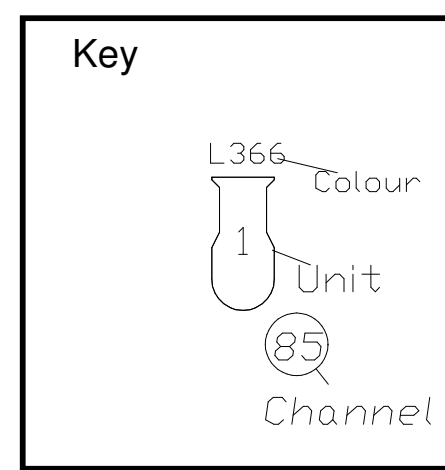


Note: Fixture #3 10' Off Deck

HR Torm



Symbol	Name	Count
	10 Deg S4	5
	19 Deg S4	21
	26 Deg S4	22
	36 Deg S4	23
	50 Deg S4	11
	6x9	24
	6x12	2
	Inky	2
	6" Fres	24
	8" Fres	2
	S4 Par NSP	2
	S4 Par WFL	10
	Par 56 WFL	16
	Par 64 MFL	4
	Zipstrip	4
	R40 Strip	5
	Elipscan/Practical	8



H.M.S. Pinafore	
MU Dept of Theatre and Dance Albert Taylor Theatre	
Lighting Design: Kyle Van Sandt	
Director: Terry Stone	
Production Electrician: Vince Modugno	
Asst P.E.: Bekki Lambrecht	
Scale: 1/4"=1'-0"	DWG 1
Date: 1/10/08	of 11

