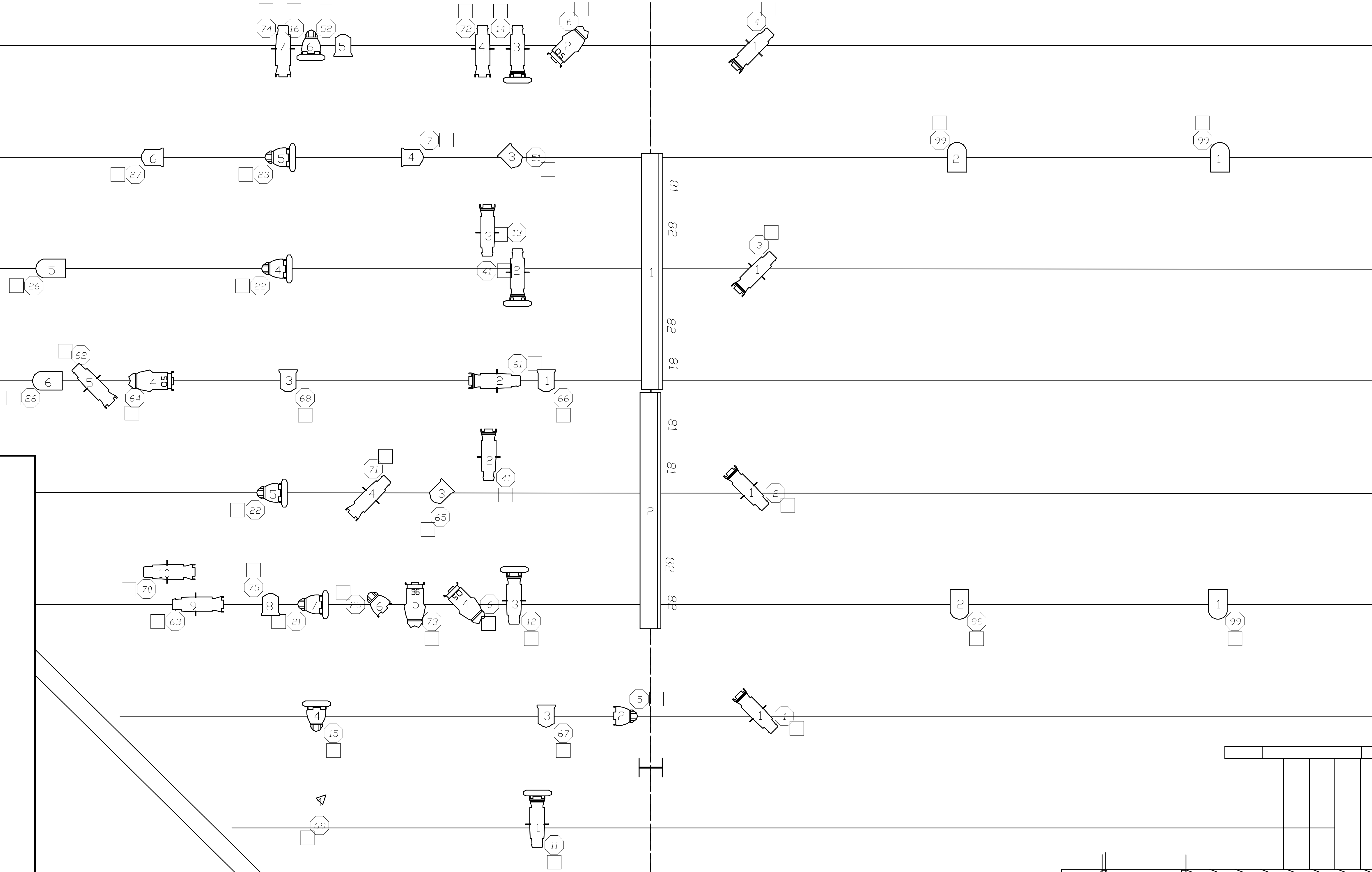


25'-0" 24'-0" 23'-0" 22'-0" 21'-0" 20'-0" 19'-0" 18'-0" 17'-0" 16'-0" 15'-0" 14'-0" 13'-0" 12'-0" 11'-0" 10'-0" 9'-0" 8'-0" 7'-0" 6'-0" 5'-0" 4'-0" 3'-0" 2'-0" 1'-0" 0'-0" 1'-0" 2'-0" 3'-0" 4'-0" 5'-0" 6'-0" 7'-0" 8'-0" 9'-0" 10'-0" 11'-0" 12'-0" 13'-0" 14'-0" 15'-0" 16'-0" 17'-0" 18'-0" 19'-0" 20'-0" 21'-0" 22'-0" 23'-0" 24'-0" 25'-0"



25'-0" 24'-0" 23'-0" 22'-0" 21'-0" 20'-0" 19'-0" 18'-0" 17'-0" 16'-0" 15'-0" 14'-0" 13'-0" 12'-0" 11'-0" 10'-0" 9'-0" 8'-0" 7'-0" 6'-0" 5'-0" 4'-0" 3'-0" 2'-0" 1'-0" 0'-0" 1'-0" 2'-0" 3'-0" 4'-0" 5'-0" 6'-0" 7'-0" 8'-0" 9'-0" 10'-0" 11'-0" 12'-0" 13'-0" 14'-0" 15'-0" 16'-0" 17'-0" 18'-0" 19'-0" 20'-0" 21'-0" 22'-0" 23'-0" 24'-0" 25'-0"

| Symbol | Name | Count |
|--------|---------------------|-------|
| | Par 56 WFL | 6 |
| | 6 inch Fresnel | 9 |
| | Source 4 Par WFL v3 | 8 |
| | Source 4 36 v3 | 6 |
| | Source 4 50 v3 | 11 |
| | Source 4jr 36 | 1 |
| | Source 4jr 50 | 3 |
| | Zipstrip | 2 |
| | Practical | 1 |

Transfiguration
 MU Dept of Theatre and Dance
 Pipedreams Studio Theatre
 Lighting Design: Kyle Van Sandt
 Director: Sarah Holt
 Production Electrician:
 Asst Production Electrician:
 Scale: 1/2"=1'-0"
 Date: 4/13/07

DWG 1
 of 1

